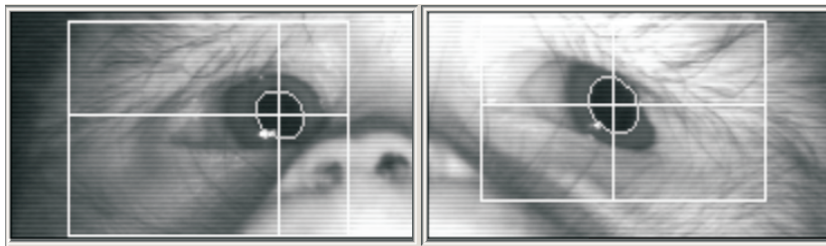


iView X™ Hi-Speed PRIMATE™

Eye Tracking Solution for Non-Human Primates



The Challenge

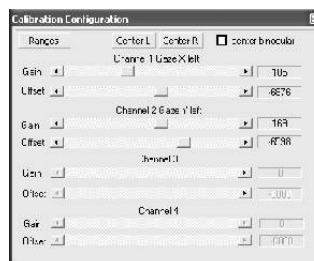
- Eye movement research on non-human primates requires a system which is easy to set up and involves as little extra training of the monkey as possible.
- Physiology, neurology, and vision research on primates often requires high spatial and temporal resolution and flexible analog voltage output.
- Scleral search coil-based systems (SCC) can be very difficult to set up. The coils require expensive surgery and can break.

The Solution – Hi-Speed PRIMATE™

The Hi-Speed PRIMATE™ system sets the new standard for non-human primate eye tracking by uniquely combining robust and precise measurement with easy, non-invasive setup & streamlined operation.

Hi-Speed PRIMATE™ offers

- **Non-Invasive, Easy & Quick Set-up**
- **Robust & Reliable Tracking**
Adaptive algorithms for efficient operation and superior results
- **Fast & Accurate Measurement**
Sample rate up to 1250Hz
Resolution down to 0.01°
- **Maintains Workflow**
Direct Analog Calibration (DirectCalibrate™) is following the same principle as scleral search coil systems by setting gain & offset
- **Synchronization & Communication**
Integrates with stimulus software (e.g. NBS Presentation®, E-Prime®, Superlab™) through TTL triggers, serial port, and Ethernet
- **Real-Time Analog & Digital Eye Data Transfer**
- **Eye Data Analysis Software**
Available for saccade and fixation analysis
- **SSC/REX Compatibility**
Compatible with data acquisition hardware systems, including REX



Sensomotoric Instruments Inc.
75 Arlington Street, 5th Floor
Boston, MA 0211
USA

Sensomotoric Instruments GmbH
Warthestr. 21
14513 Teltow/Berlin
Germany

www.smivision.com



- **Up to 1250Hz sampling rate**
- **Replacement for Coil Systems**
- **Mono-/Binocular**
- **Completely Non-Invasive**
- **No Consumables**
- **Maintains Workflow**
- **High Spatial Resolution**
- **DirectCalibrate™**



Contact SMI for global
distribution network
information